

Study on Integrating Excellent Traditional Culture with Ideological and Political Education in the New Media Age

Shi Zheng, M.Sc

Shi Zheng, Lecturer, School of Geography and Tourism, Baoding University, Baoding 071000, China

Correspondence LecZheng; hqzsxe@163.com

Objectives: Our country has 5,000 years of cultural history. In this long history, the five thousand years of outstanding culture in China is an important foundation for our current ideological and political education. **Methods:** Under the new media age of today, culture affects our basic necessities of life, and has a great effect on our socialist values and our own true values now. **Results:** This paper used clustering algorithm to probe into the integration of excellent traditional culture into ideological and political education in the new media era. It has brought us new opportunities. **Conclusion:** Even the students in all colleges and universities now knew that our present excellent culture had a great influence on ourselves and that we have studied our new cultural contents.

Keywords: traditional culture; new media; political education

Tob Regul Sci.™ 2021;7(5-2):4579-4586

DOI: doi.org/10.18001/TRS.7.5.2.24

Nowadays, we are at a time of rapid development of new media. The development trend of Chinese excellent culture by our country also teaches us to pay attention to the study of traditional culture. And we also need to learn how to integrate excellent traditional culture step by step into our now in real life¹. China's five thousand years from top to bottom is a very profound cultural accumulation. These outstanding cultures make our present life rich and colorful and make our life more meaningful. It is as if it is now devoted to studying this kind of thing². We just want to strengthen the understanding of culture and learning. Whether we live in culture or not, whether we are adults or children now, we know the importance of culture and are the most important cultures in our country [3].

For us now, culture is our beacon. When will not go out, we should take the initiative to learn about our country's traditional culture and then integrate these meaningful things into our

present life. So our study is to respect the excellent traditional culture in the past. That is why we should learn all about traditional culture but only learn to absorb these excellent cultures thoroughly⁴. The study of this article is of great help to us in the study of traditional culture in the future as it is because of the emergence of the new media era. It is because of our traditional culture that we have a place in our daily life which is very important role and significance⁵

The study of traditional culture in our country is still very deep, with so many traditional cultural resources. Our progress is fast. It is like the military and economic progress we can see in recent years. Therefore, we now have no influence on the culture at any time⁶. Domestic scholars have never stopped studying the ideological and political education. There are so many articles about traditional culture in the early days that our study is now very fast. Now is the new media and self-media era. Have to say that the impact of cultural soft power on a country is great. So now

our research is very useful and it is not harmful to the development of our country.⁷

There are also many foreign studies on the traditional culture of our country, such as the Confucius Institute established by Britain and other countries in order to study our excellent traditional culture⁸. The establishment of these institutes is the respect for our country's outstanding culture by foreign leaders and foreign scholars as well as the desire to study and study our culture. We want to overtake us in some way⁹. We all know that our country is a populous country and that there is great potential for a large country with a long history of 5,000 years. Flying over other countries is very optimistic about the development of our country. In many aspects, we have had a visit to our country and the first to establish a Confucius Institute at home. A good image is set¹⁰.

METHODS

Construction and Realization of Clustering Algorithm Based on Integration of Excellent Traditional Culture into Ideological Education

With the development of our country, for the importance of culture, we can see from every

aspect of our daily life. It can also be said that the traditional media are spreading the fine traditional culture. At this time, most of them use the indiscriminate lectures and the so-called general panels and forms dull broadcasts and also TV announcements as communicators face different levels of knowledge and diverse interests. This is difficult to grasp the depth and depth of the spread of outstanding traditional culture. Then we greatly reduced the effectiveness. As we all know, the diversification of new media can easily achieve the text, pictures and audio, video, as well as mobile newspaper, as well as mobile TV, as well as social media and the news client and other means of communication will be effective integration. For different needs of individuality, to create different levels of traditional culture and communication platform and content, this article explores the integration of excellent traditional culture into ideological education with the aid of clustering algorithms, which are the main methods of our current large-scale big data project. This can significantly reduce the time and manpower we spend, which will greatly reduce the pressure on all aspects of our needs. The following table shows our survey analysis, as shown in Table 1:

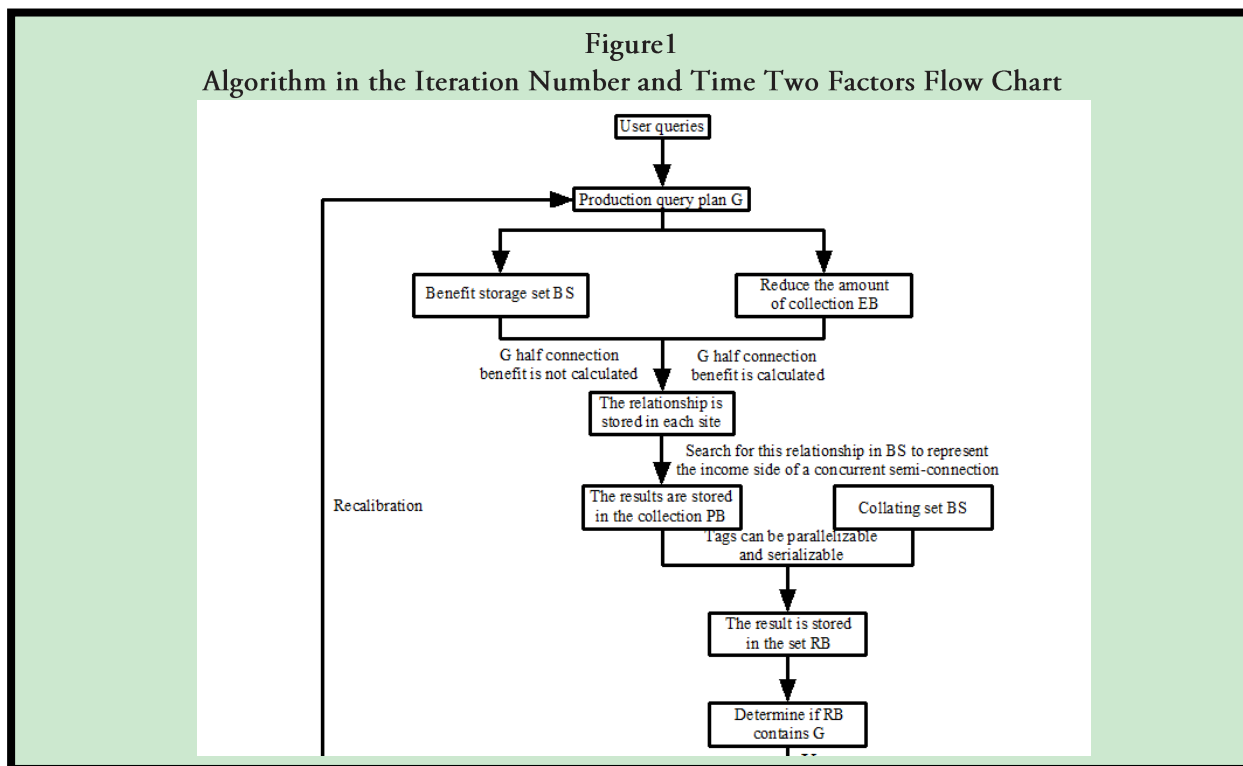
Data set	DPKids	DPNMids	Fast Mids	MDkdis	SDKids	DPCids
Iris	no	advantage	advantage	advantage	advantage	advantage
Wine	no	advantage	advantage	advantage	advantage	advantage
Wdbc	no	advantage	advantage	advantage	advantage	advantage
Pid	no	advantage	advantage	advantage	advantage	advantage
Bupa	no	advantage	advantage	advantage	advantage	advantage
Sonar	no	advantage	advantage	advantage	advantage	advantage

In the table above we can see that with the exponential increase in the level of Internet content, our requirements for documents that manage large-scale data are no longer sufficient for our growing needs. This time for a good algorithm is very urgent. Our research in the area of information search has gained widespread acceptance. And no matter what method of research we can not do without culture. Research

algorithms need culture, experiments need culture, access to literature also needs culture, culture in all aspects of our side. Our daily needs are one aspect of our own initiative. Now the new media technology also provides a new way for our cultural communication, always before the news media. Now we can say that everyone has a cell phone, the phone can see the news. This is no longer before our situation in the old days. We

can selectively do what we want. Clustering algorithm is a good solution to this problem. See

the following figure for a more detailed step chart, as shown in Figure 1:



In the above visualization, we can see the detailed research steps and operation methods of the clustering algorithm. We all know that the performance of the clustering algorithm is easily affected by the model. If the models do not match, there is also a great obstacle. Most of the clustering algorithms are many of the models that we see around the clock, when all of our models are able to meet our requirements. The strategic issues that exist between these models are our needs. Strategic, to meet more, then that is to say his performance is better. For example, what we have seen before is the implicit assumption of the K-means algorithm that when we assign parts of different types of documents belonging to the same cluster to a distinctly spherical area in each particular feature space, then we are easy to see that the center of the sphere is equal to the center of the cluster, we put different clusters where the sphere of the same radius with the same to you pick up. However, the actual corpora contained therein seldom satisfy such ideal and so real strict

assumptions. So, when we know that the K-means underlying assumptions have been corrupted to some degree. Then the performance of the K-means algorithm will be affected in varying degrees by the model mismatch problem.

Calculation of Clustering Algorithm Based on Integration of Excellent Traditional Culture and Ideological Education

We have carried out a detailed analysis of the model mismatch problem in the above, and we want to make the distance measurement design more in line with our experimental conditions, so we put each cluster uniformly into a more standard spherical state the area of the. But the question of the dimensions of our space in this paper has been a hurdle now that our data is sparse and normalized. Therefore, we put forward the concept of clustering algorithm for these problems. First, we divide this into two steps: (1) Select some coordinate system with its own unique features to explain the scale, using distance

$$\sigma_t = \sqrt{\frac{1}{n_t} \sum_{x \in c_t} (x_{j,i}^c - \|m_t - m\|_2)^2} \quad (6)$$

The last formula we used in the above equation is more comparable. As we saw earlier, different clusters have different distributions. The projection of each cluster on the corresponding coordinate axis is also the connection of different data points. In other words, in the research of this paper, the connection of our data points is determined by the density of all of us. So what we are looking for will be helpful to all of our laboratories. The following is a flowchart of our research:

as A more rational role, so the first step of the process is completed; (2) We then re-scale the new coordinate system according to the characteristics of each intrinsic cluster, the distance is more reasonable until the algorithm converges to the final solution. We need to facilitate the integration of the experiment described below, so before the experiment we make some agreement. We guarantee that for all corpora containing a total of K clusters, all of which contain N documents, we mark the clusters of these in different ways as C1, C2, ..., Ci, ..., respectively, with the number of documents corresponding to them respectively For n1, n2, ..., is the center of the entire corpus. n Recall the classical Fisher linear discriminant, for the multi-class case, the algorithm solves the most discriminative direction by maximizing the dispersion between classes and minimizing the intra-class dispersion. The optimization criterion function is as follows:

$$J(W) = \frac{|W' S_B W|}{|W' S_w W|} \quad (1)$$

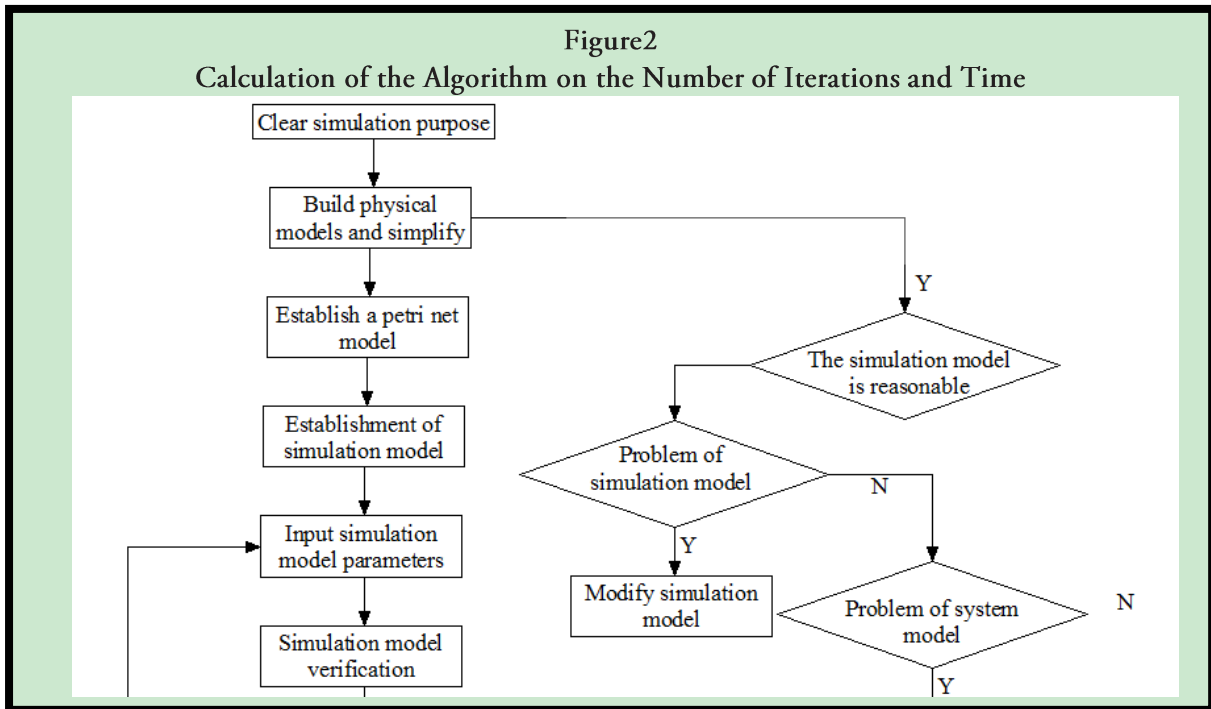
$$S_B = \sum_{i=1}^K n_i (m_i - m)(m_i - m)' \quad (2)$$

$$S_w = \sum_{i=1}^K \sum_{x \in c_i} (x - m_i)(x - m_i)' \quad (3)$$

The above formulas are all our required research formulas and we can see in our research that in our research now we need to go into more detail, whether it is a specific parameter or a parameter needed for valuation and discussion. In this paper, we can see that in the classifier matrix in open space in the above optimization rules. This requires more optimization of both dispersion and internal dispersion. And in our proposed solution to the framework for optimal comparison, in the above experiment we built into the new coordinates we will go further according to the characteristics of the cluster to perform the rescaling operation.

$$J(W) = |W' S_B W| = \left| W' \sum_{i=1}^K n_i (m_i - m)(m_i - m)' W \right| \quad (4)$$

$$x_{j,i}^c = (x_j - m)^t \frac{(m_i - m)}{\|m_i - m\|_2} \quad (5)$$



In the picture above we can see that the idea behind the research is very broad as in the process we are doing research in all things. This is in the form of our current course of ideological and political theory as well as classroom teaching in colleges and universities. We can all know that no innovation will not work in the new media era. This is a student perspective of our class teaching and discussion to know how effective our current classroom efficiency is. In today's context, there are many ways of cultural transmission which we can see. We can all adopt new ways such as Weibo, WeChat, QQ and so on, so that for our present situation, the traditional culture in our country can make excellent traditional culture more popular and stylish but popularization is also indispensable. We are important promoters of a new era. First of all, we should go to practice teaching activities, and we should guide our education process based on the foundation of practice teaching base. At home and abroad, there are many humanistic quality education bases focusing on Li Bai culture like now. In short, the research of clustering algorithm provides strong support and guarantee for our future research.

RESULTS

After all the above research processes are completed, the research on our ideological and political education under the traditional culture of excellence under the new media age is also very mature. The requirements of our five thousand years of Chinese content are also very high. Guaranteed Culture is an important national resource for our country and a spiritual pillar of our nation. No matter at what time, in the past emancipation, or in the present era of new media, we can all know that the present strength of culture for us is very strong, whether you are what level or department can not be exempted from all the research we need to know, making our life more toward well-to-do life. However, if we want to push this algorithm to the foreground, we must know his specific benefits so that our argument is convincing. Here we have a comparative experiment, the first one is the experimental data of non-clustering algorithm, add Table 2 Shown:

Table2
The Number of Iterations and Times Chosen By the Six Algorithms on the Uci Dataset

Data set	DPK medoids	DPNM	Fast M	MDk	SDK	DPC
Iris	1100121	1776121	1100121	1190121	1107121	1108921
Wine	3244363	1100121	1100121	1100121	2343221	1235651
Wdbc	1123423	1100121	1100121	1100121	1100121	1100121
Pid	1100121	1100121	2352355	1234231	1155121	1144121
Bupa	1106721	1102344	1234421	1100121	1333121	1234231
Sonar	1165121	1176921	1100121	1230121	1200121	1178121

From the above table we can see that the non-clustering algorithm used before to calculate the result is very tedious. What we are familiar with is that our first priority on the basis of the data is accuracy. What we can see in this non-clustering algorithm is that there is no problem in the accuracy of the data. But in the process of calculation, the lengthy time spent on us due to the complicated steps. Time is a non-renewable resource. Lost will not come back. All scholars deal with time very strictly. So now for us, the

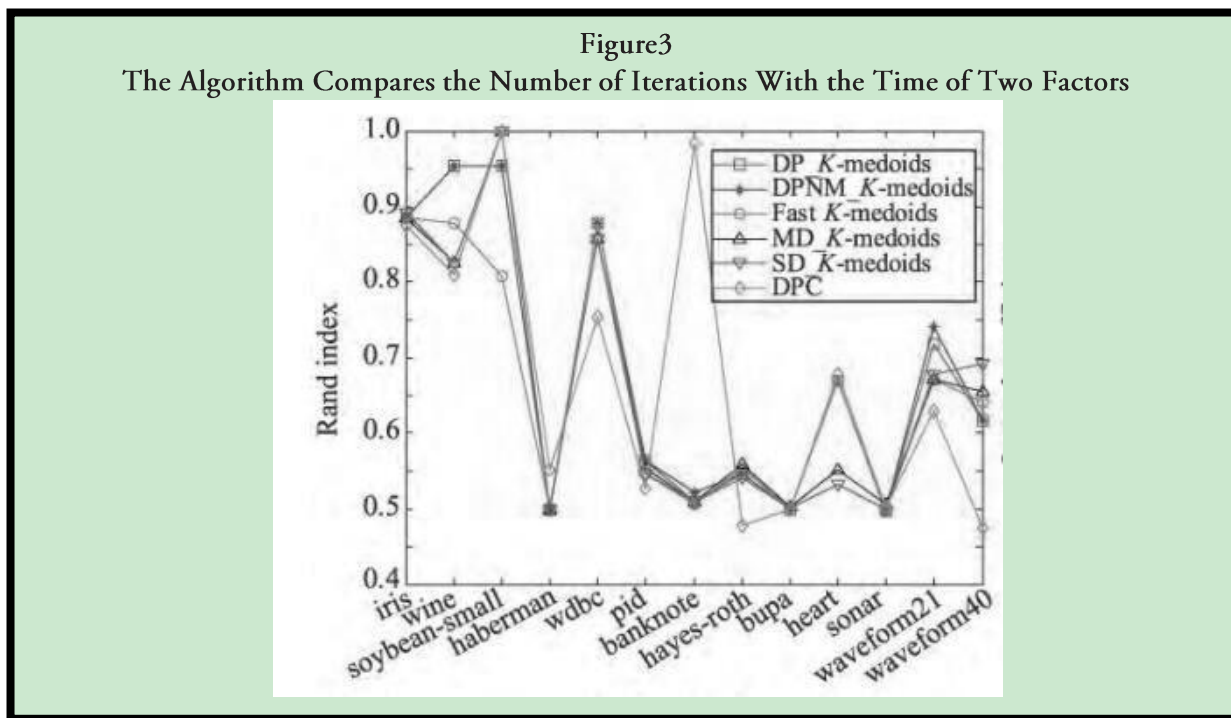
speed of the experiment directly affects the output of our results is not worth to be applied. It is a pity that these times are wasted. Whether it is not our inquiry into the integration of Chinese traditional culture into ideological and political education under the new media in this article, we always have an impact on our efficiency. Therefore, we have formulated the second set of experimental data as shown in Table 3 below:

Table3
The Number of Iterations and Times Chosen By the Six Algorithms on the Uci Dataset

Data set	DPK medoids	DPNM	Fast M	MDk	SDK	DPC
Iris	1100121	1776121	1100121	1190121	1107121	1108921
Wine	3244363	1100121	1100121	1100121	2343221	1235651
Wdbc	1123423	1100121	1100121	1100121	1100121	1100121
Pid	1100121	1100121	2352355	1234231	1155121	1144121
Bupa	1106721	1102344	1234421	1100121	1333121	1234231
Sonar	1165121	1176921	1100121	1230121	1200121	1178121

In the above table we can see that in our calculation of clustering algorithm. The result is a certain law more in line with our experimental requirements, and greatly reduced in the run-time. This is very different from the previous study of non-clustering algorithms. Our research in operation is very hard work. For example, we assign different people to control different periods of time for the normal experiment, which is characteristic of all of our time. In the

algorithm of this article, we wholeheartedly want to make the algorithm more perfect and make our present research proceed more smoothly. Maybe it is our chance that maybe our research is more scientific, and finally we have developed this clustering algorithm, making our research more accurate, more concrete and more authentic



After the above two tables of data comparison and calculation steps of different algorithms we have made the different algorithms shown in the figure on different data processing curve so that we are in the description of the clustering algorithm in the integration of ideological education more reflect the ability to have, so that we can have more words in the latter part of promotion so that our research can achieve very powerful. The actual needs are fundamental to our research and economic benefits are our pursuit of such an algorithm to be the one we developed under all circumstances more in line with what we now do well in the new media age. All of this is to make our research more perfect and can bring great significance to the progress of our country and the progress of our country.

DISCUSSION

Nowadays, we are at a time of rapid development of new media. The development trend of Chinese excellent culture by our country also teaches us to pay attention to the study of traditional culture. And we also need to learn how to integrate excellent traditional culture step by step into our Now in real life. Five thousand

years from top to bottom in China is a very rich cultural heritage. These excellent cultures make our present life rich and colorful and make our life more meaningful. It is as if we are going to study some of them now. This article is very deep and of great significance for exploring the integration of traditional culture into ideological and political education in the new media era. The production of meaning is the generation of the clustering algorithm for our research. Our present research shows that whether or not all the results are due to one sentence is an extension of the culture. Culture is the root of a nation is the soul of a country. Then our ideological and political education is the use of cultural tools so that we can learn the essence of culture. This makes us creative and all innovations have a cultural shadow. This is inevitable. Just as we cannot do without the air, the development of our country cannot be separated from the culture. The advent of clustering algorithms has accelerated the pace of this process a lot, and our country has progressed more rapidly.

Human Subjects Approval Statement

This paper did not include human subjects.

Conflict of Interest Disclosure Statement

None declared.

References

1. Ispalanda S. Gender, Race, and Justifications for Group Exclusion: Urban Black Students Bussed to Affluent Suburban Schools.. *Sociology of Education*, 2016, 86(3):218-233.
2. Law A. 'The Callous Credit Nexus': Ideology and Compulsion in the Crisis of Neoliberalism. *Sociological Research Online*, 2017, 14(4):330-340.
3. Lin X, Shih M J H, Labandeira C C, et al. New data from the Middle Jurassic of China shed light on the phylogeny and origin of the proboscis in the Mesopsychidae (Insecta: Mecoptera). *Bmc Evolutionary Biology*, 2016, 16(1):1-22.
4. Mitra A, Mitra S. Electoral Uncertainty, Income Inequality and The Middle Class. *Economic Journal*, 2017, 127(602):1119-1152.
5. Reshetylova O, Samokysh I, Tomak M, et al. Russian Liberal's Standpoint. *Journal of Diarrhoeal Diseases Research*, 2017, 12(2):129-32.
6. Scheid J. Chapter 10. Why Did Roman Religion Change? : The Gods, the State, and the Individual Reflections on Civic Religion in Rome. *Medical Entomology & Zoology*, 2016, 16(9):3151-3152.
7. Wang S, Wang S. Construction of Mobile Teaching Platform for the Ideological and Political Education Course Based on the Multimedia Technology. *International Journal of Emerging Technologies in Learning*, 2017, 12(9):156.
8. Yijun Z. Ideological and political education of college students based on the computer platform. *Agro Food Industry Hi Tech*, 2017, 28(1):2397-2402.
9. Yinxiang Z. Efficiency of public opinion in social network in the ideological and political education of college students. *Agro Food Industry Hi Tech*, 2017, 28(1):693-696.
10. Zhang J. Analysis on the College Students' Ideological and Political Education Effectiveness under New Media Era. *Economics of Development*, 2015, 53(1).