

Introduction of New Anti-dumping Algorithm in EU under WTO Law System Based on Particle Swarm Optimization

Wenwen Deng, M.Sc

Wenwen Deng, Lecturer, Mudanjiang Normal University, Mudanjiang, Heilongjiang, 157011, China

Correspondence LecDeng;kycfgc@163.com

Objectives: Anti-dumping new algorithm is an innovative ability based on the WTO legal system, which has made an important contribution to the economic development of the EU system. **Methods:** At present, the operation mode of new antidumping algorithm has some defects, such as structure confusion and incomplete system implementation, which affects the development progress of EU economic growth. **Results:** Based on the above problems, in this paper, particle swarm algorithm is introduced, based on the optimization analysis of the website structure of the new antidumping algorithm, through the independent screening analysis of particle swarm optimization, combining the WTO economy with the EU status theory. **Conclusion:** the paper obtains the optimized anti-dumping innovation scheme on the basis of particle swarm algorithm analysis, and finally passes the input test. The feasibility of the scheme is established.

Keywords: new anti-dumping algorithm; wto; the economic situation of the eu; particle swarm algorithm

Tob Regul Sci.™ 2021;7(5-2):4558-4567

DOI: doi.org/10.18001/TRS.7.5.2.22

Over the past century, the application of WTO economic theory has concluded that the new anti-dumping algorithm is a reform channel with broad development prospects¹. On the basis of the WTO economy, the analysis of various schemes can extend the benefits of the selected scheme to the best state². However, the theory is fixed, cannot be in the special circumstances of human judgment, making decisions sometimes with the reality of deviations, need to be supplemented by particle swarm algorithm³. Through the auxiliary judgment of particle swarm algorithm, the integration of the new algorithm of strengthening the structure optimization scheme can make greater progress on the original basis⁴.

Rational operation is one of the concepts shared by the WTO economy and particle swarm optimization algorithm, which integrates

probability, efficiency and inference in the process of particle swarm optimization⁵. In today's labor market, the implementation of the European Union is not as satisfactory, the reason is that the artificial ideas cannot be doped to the decision-making stage, cannot achieve the "people-oriented" approach to development. In order to compensate for this shortcoming, the system model of particle swarm algorithm combined with the new anti-dumping algorithm is born, and both of them have a very reliable practical basis⁶.

New anti-dumping algorithm the web site structure determines the development direction of the WTO economy to some extent, and it needs to construct a feasible structure optimization promotion strategy⁷. The position of EU theory lies in the hard demand of the society, cannot stand the decision-making in the international angle, and need the participant to completely expose the demand and supply and demand

information, on the basis of the EU distribution, cannot get the real appeal of the participants ⁸. The aim of the optimization structure is "people-oriented" policy, reasonable according to the demands of the participants to collect, achievement of a sustainable development of a strategic approach.

The Basic Law of the new anti-dumping algorithm adopts the policy principle of "people-oriented", and the reliability of the analysis process can be guaranteed by the particle swarm Optimization model. At the same time, this paper also takes the particle swarm optimization algorithm for business structure detection, for the test process encountered in the range of ascension to predict, in the analysis of the problem before the issue of the overall control ⁹. In order to achieve complete accuracy, it is necessary to design and process the hidden layer, and use computer technology to classify it, and then input the required content data into it to ensure the smooth operation of the whole particle swarm algorithm ¹⁰.

METHODS

Model of Particle Swarm Optimization

In the beginning of the particle swarm optimization model, it is advantageous for the next step to carry out the theory analysis procedure for the integration of series of scalable space in the EU Resource allocation field. Through series of operational problems, distribution conflicts and other information in the current European Union, the input into the computer system, the use of systematic screening, compressed into the data packets into the particle swarm optimization algorithm, screening and lifting operations, in which the integration of the search links, carry out the implementation of the EU allocation strategy, the intelligent model using computer algorithm calculation, according to the data of each algorithm to the indicators, the information data input to the theoretical analysis system, the model received data for digestion, the final completion of the entire collection model. In this process, using the auxiliary function of the computer system, first through the operation of particle swarm

optimization algorithm, get the theory analysis scheme; use the computer specific code to classify the theory analysis scheme data, so as to provide the precondition for the next work development. Then based on the theoretical analysis of the scheme coding, according to the EU Resource allocation optimization strategy, we will be considered P as a branch of the theoretical analysis of the project coefficient, α for the new anti-dumping algorithm site innovation optimization coefficient, bme representing the feasibility of innovative solutions, δ as an optimization coefficient, through the calculation of the following formula, The classification integration coefficient of the new antidumping algorithm is obtained.

$$\begin{aligned}
 p(i) &= \frac{bme(b)}{\delta^2} \sqrt{\alpha_1 b} \\
 p(o) &= \frac{\alpha_1 - bme(b)}{\delta^{0.5}} \sqrt{bme(b)\alpha_1}
 \end{aligned}
 \tag{1}$$

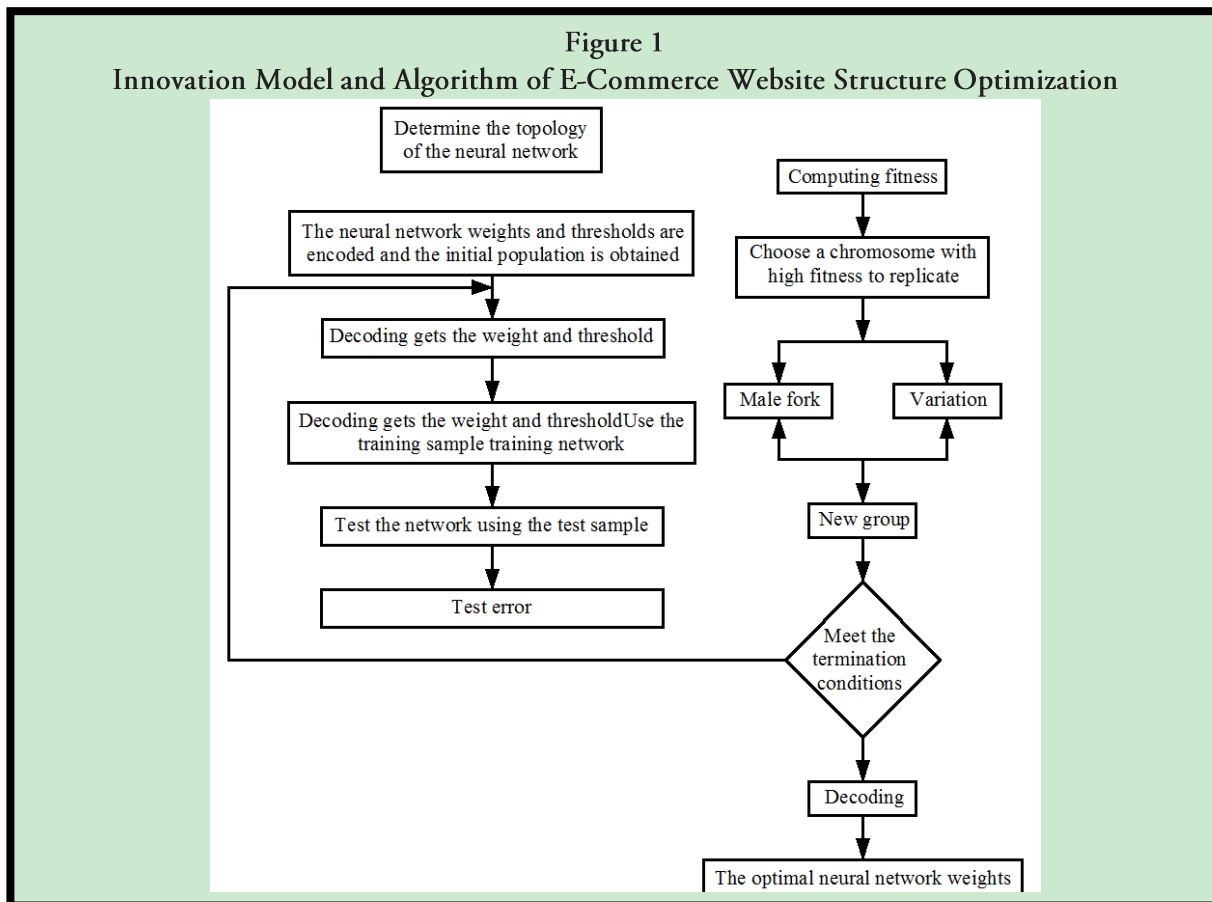
In the formula, considering the reliability of the classification integration coefficient, we will continue to make error retrieval for each link of particle swarm optimization model to ensure the accuracy of the resource allocation model, in which the collection algorithm is used to organize, the independent numbering is entered into the algorithm, the computer system is automatically integrated and the output result is respectively, 1 and 0 represent accuracy, of which 1 is accurate, and 0 is error. In the process of calculation, the computer system is automatically numbered for each calculation process by means of the number of the algorithms examined in the representative theory Ψ . In addition, M and I representing the performance and feasibility of the nodal theory, y representing the optimization coefficients of the new antidumping algorithm, the purpose of inserting the above model is to ensure the operation efficiency of particle swarm optimization model, and also to guarantee the operation flow of the formula, as shown in the following formula:

$$M_y 1 = \frac{I_1 y_1}{I_1 + I_2} \times M_y
 \tag{2}$$

After guaranteeing the accuracy, finally to determine the final solution, using the optimal screening algorithm, which F represents the optimal node coefficients, b representing the deviation coefficient, s representing the section of the theoretical analysis scheme of the range of variables, through the control of the optimal value coefficient, to build the optimal information acquisition mechanism. Considering that the maximum stress amplitude of amplitude fatigue can be used as the best form, the optimal point position control is adopted in this form, and then the theoretical analysis system is further perfected. Theoretical analysis of resource allocation control system the filter formula is as follows:

$$F_f = \frac{\sum_{n=1}^{n=1} b_n + s_n}{\sum s^{0.5}} \quad (3)$$

The acquisition of an optimized filtering algorithm represents the operation reliability of this particle swarm optimization model, because the algorithm process constructed in this paper belongs to the level-by-layer test mode, that is, no further operations can be performed until the previous algorithm can determine the accuracy. The conclusion must be reliable and feasible. After the optimization factor is obtained, the function of automatically picking the optimal online transaction is played out, and the next step is to output it to the User view page, as shown in Figure. 1:



An optimization Scheme of New Anti-dumping Algorithm

After the particle swarm optimization model is built, the particle swarm algorithm model and the new anti-dumping algorithm model are fused. In the process of overlap, it is necessary to consider the commonality of the system, that is, whether the optimal innovation scheme can be combined with the computer algorithm to the highest degree, so that the design and the operation result are matched. In the process of project design and output, the staff needs to carry on the information recording work in time, and the information entry of the new anti-dumping algorithm is guaranteed to the maximum degree,

and the accuracy of input analysis information is ensured. Secondly, the analysis of the data processing, the main need to complete the EU resource allocation of inefficient information integration, through the algorithm to effectively deal with, in all aspects of consensus, to achieve the smooth operation of each algorithm for the operation of various algorithms to provide protection. Finally, it is introduced into the resource allocation system from the output of the innovative optimization scheme, and the EU resource allocation and the EU resource allocation are collected by the algorithm. During the lap up process, part of the overlap is randomly selected, as shown in Table.1 below:

Table1
Algorithm of E-Commerce Website Structure Optimization

Information integration phase		Optimal innovation model		
Accuracy rate	Resonant adjustment	Efficiency	Overall effect	Remarks
1	0.93	0.94	0.94	92.2%
2	0.87	0.97	0.96	96.2%
3	0.98	0.89	0.98	93.1%
4	0.91	0.83	0.90	96.6%

As shown in table one, in the lap stage of the theory Analysis scheme f , which is used to represent the model total data algorithm, and use the standard data x, y representing the material model, this algorithm adds a set of models to ensure objectivity in the information integration stage. To ensure the accuracy of the results, we need to reduce the error of the algorithm. This part of the design first by constructing a corresponding probability calculation f , after inputting the corresponding training algorithm, obtains one optimization result Y . The formula used is as follows:

$$f = \sqrt{-1 + x \left(\frac{2-x}{2^{22}-1} \right)} + \sum y_i \quad (4)$$

Using this formula, we can get the optimization scheme of particle swarm algorithm model in EU resource allocation reform, taking the resulting fitting value for further operation, in which pcl is represented by the optimal coefficient, u representing the standard coefficient and y representing the set of optimization coefficients, the numerical results obtained are the optimization innovation coefficients in the EU resource allocation model, The final calculation is based on this.

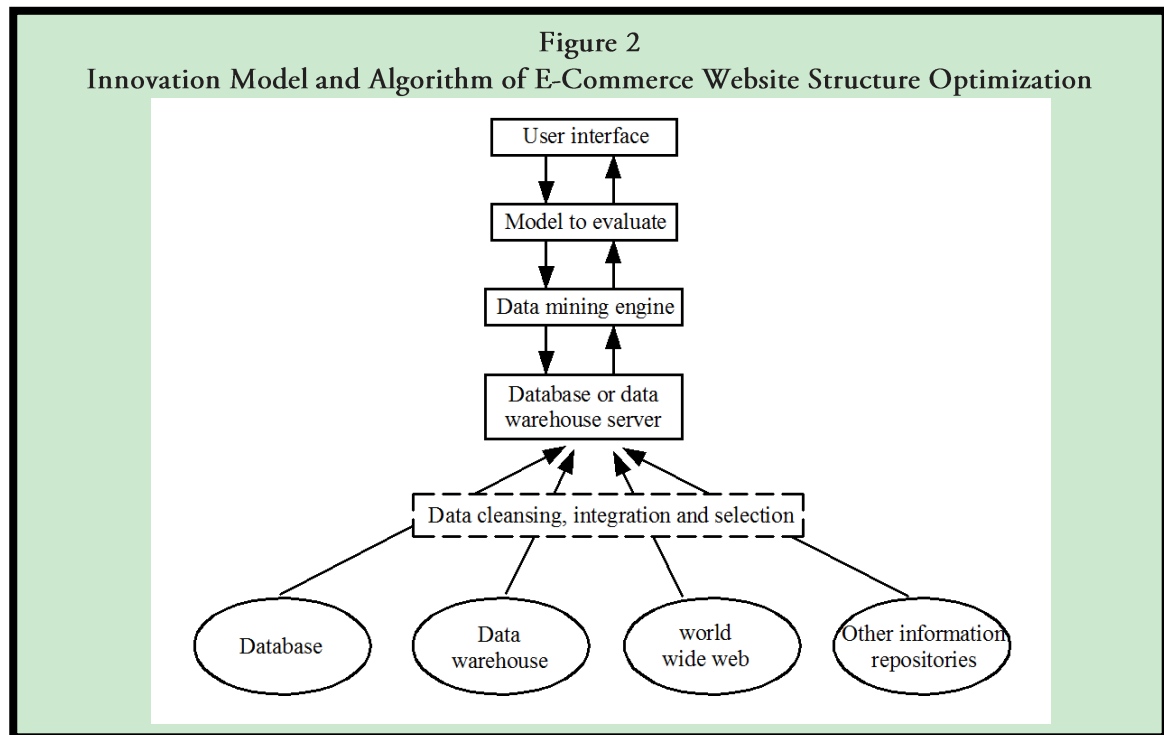
$$pcl = \sum \frac{u_i}{2} + \frac{y_i + u_i^{0.5}}{y^{0.8}} - \frac{2y_i}{u_i} \quad (5)$$

The above results provide the basis for calculation, which is for the final step to obtain

output instructions to pave the way, through the centralized operation of all functions, finally obtain an output value, the use of particle swarm algorithm to operate, the next expression of the new algorithm platform optimization coefficient N , $\varphi_x A$ representing the structure optimization strategy, $\lambda_x W_x$ represents the value of the algorithm, β_{mx} representing the innovative development value, f represents the electric quotient model marking, represents the innovation structure coefficient, uses these data to establish the corresponding function relation, obtains the corresponding difference value sequence. If the corresponding classification problem is encountered, we can take the aggregate function, assuming the value of f is between the region $(-1, 1)$, the output function is the following formula:

$$\frac{N}{\varphi_x A} + \frac{\beta_{mx} M_x}{\lambda_x W_x \left(1 - 0.8 \frac{N}{N^x W_x} \right)} \leq f \quad (6)$$

After the optimal numerical value is determined, based on the algorithm S and the theoretical analysis of the results of the output of all the algorithms, according to a series of optimal values, it is integrated into the particle swarm algorithm model, calculate the corresponding joint probability, to obtain the optimal scheme to determine the coefficient, the specific running process as shown in Figure.2.



Through the arrangement of the EU Resource allocation optimization scheme, we can get the big analysis direction, carry out the reliability support of the particle swarm algorithm, and implement the EU Resource Allocation optimization scheme, and get the final result of the Theoretical analysis optimization scheme. In this process, the theoretical Analysis scheme framework as the middle of the convergence, the design accuracy requirements must meet the principle of the construction of the algorithm to ensure the accuracy of the calculation process. Finally, in the end of this process, the theoretical Analysis Scheme Optimization index is collected and the optimal solution is numbered through computer technology, in which the calculation of the formula is carried out by particle swarm algorithm, and the blind area of the centralized theoretical analysis system is obtained, and the theory analysis system is used to classify the resource allocation scheme data. The design of the new anti-dumping algorithm website resource Allocation Optimization Innovation scheme is designed by using the automatic

regularity.

RESULTS

The application of particle swarm optimization (PSO) model can be used to find a wider choice for the majority of the participants on the basis of the new anti-dumping algorithm platform. In this paper, trading volume is used as a variable to test the advantages of anti-dumping system through objective test data. To participate in the EU's economic flow as a test basis for participants in the EU model information collection, as a test before and after the evaluation of the participants. At the same time, before carrying out the test, it is necessary to test the system fluency of the particle swarm optimization algorithm, and to make a random numerical input to the EU resource allocation model to observe the reliability of the system, so as to get the best performance in the process of resource allocation. Then, the EU resource allocation variables are simulated and the simulation method is used to test the scheme. This simulation test will be based on the database, through the resource allocation simulation of the

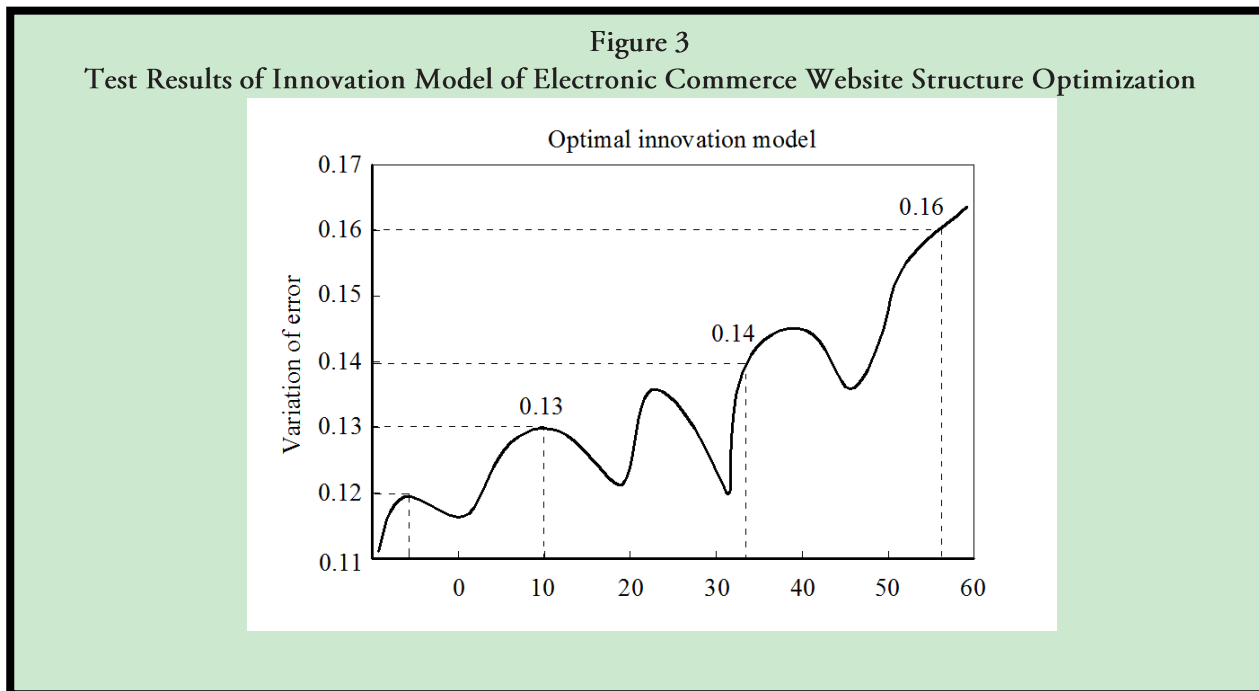
exchange process, as well as the application of particle swarm algorithm model, employing professional financial staff to observe the record.

For the exchange to be collected and rated, the resulting error data is shown in the following table.

Table2
Innovation Model Test of E-Commerce Website Structure Optimization

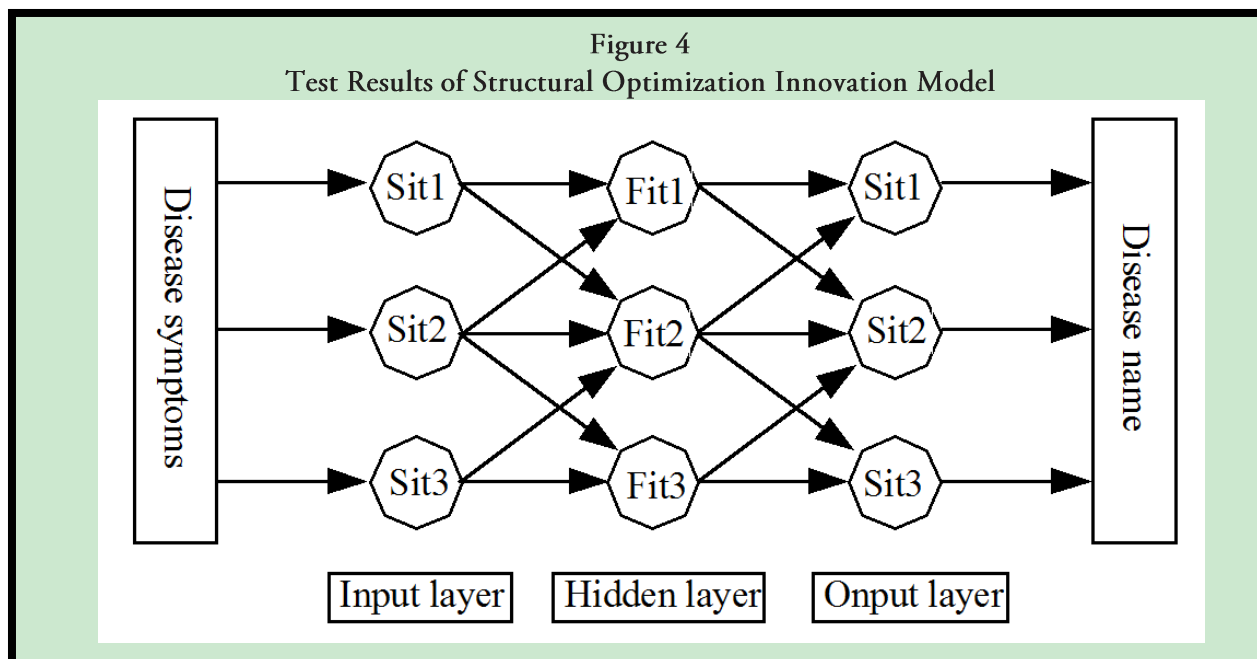
Financial Risk Early Warning System			Optimal Innovation Model			
Factor	Detection	Operating	Effect	Smooth	Design	Success
Optimal innovation model	1	0.9	2.9	3.2	4.2	6.2
	2	0.8	2.7	4.1	4.0	4.6
	3	0.9	1.9	2.7	5.3	3.5
Traditional manual processing	4	1.8	0.9	2.4	6.2	6.3
	5	2.3	1.0	4.5	7.0	3.2
	6	1.9	1.1	2.0	7.1	1.4

The superiority of particle swarm optimization (PSO) model in the application process is obviously demonstrated by the data of the above table. In the course of this test, there were some errors, but at the same time the error occurred, the investment judgment error backup was immediately entered in the particle swarm algorithm model, this aspect shows that, if the original communication process, to do the simulation, the above analysis error will not appear, because in the process of testing, Errors have been automatically repaired by particle swarm algorithm models. This is the advantage of PSO model is superior to dynamic algorithm, which can continuously enlarge the advantage of memory performance, can optimize the system continuously in the process of application, adjust and optimize according to the investment atmosphere. Therefore, during the idle time of the program, the scheme is opened and the artificial input data are continuously simulated, and any additional resource allocation is applied to the investment and theoretical analysis, which is filled continuously, and the accuracy of particle swarm optimization model is continuously improved by using the self-improvement and repairing function of PSO model. The use of the PSO model takes time to accumulate, but its memory performance backup will not be replaced until it is put into use, which is one of its advantages.



We will make the concrete model as shown in the results, we can see that in the process of testing, the theoretical analysis system can be automatically repaired by particle swarm algorithm model. The system can continuously enlarge the memory performance advantage, and can optimize the system continuously according to the resource distribution atmosphere. Therefore, in the idle time of the scheme, open the system and continuously human input analog exchange data, arbitrarily add the actual case of resource allocation and theoretical analysis of information, continuous filling, can ensure the operation of the system. It can be seen from the graph that, with the weakening of the resource allocation, the particle swarm algorithm model will enter a theoretical analysis state when the baseline is reached, and then the efficiency of each resource allocation will be greatly improved. At the same time, the resource allocation optimization system should be considered to expand, through the maximum scheme screening, increase the space to collect more available algorithm resources, easy to achieve optimal performance in this process. While testing for fusion, we intercepted part of the data

as a flowchart, as shown in Figure.4.



Based on the test results of the distribution scheme of the PSO model, we can see from the test result that we can provide support in the view of the public psychological demand on the basis of the decision result of the new anti-dumping algorithm, which not only guarantees the implementation of the WTO economic principle, but also can take into account the psychological satisfaction of As shown above, in the single variable of guaranteeing the implementation of WTO economic principle, the economic strength of the participants does not fluctuate greatly, but the degree of psychological satisfaction is far less than the model of particle swarm optimization. It can be found that the particle swarm optimization (PSO) system can only play a positive role for the participants, and it has no effect on the EU's new antidumping algorithm and its results. Again, the curve of EU financial allocations, it can be seen that the use of particle swarm optimization as an auxiliary system, not only does not increase the financial burden of the country, but to some extent, the country's economic allocations to provide more flexibility. In order to ensure the organization of the EU resource allocation, the two-variable model can be processed, and the

corresponding judgment should be made according to the analysis and the status information of the participant. Therefore, the resource allocation theory analysis model, whether in dealing with a single variable or multivariable situation, can ensure the stability of the national economy on the basis of the interests of the majority of participants to maximize.

DISCUSSION

The EU Resource Allocation field belongs to the key position of international economic regulation, and it can ensure the steady development of EU economy by dealing with the analysis vigorously through reasonable plan. When the EU implements the economic analysis rationality, it can improve the economic level of the EU by using computer system programming and participating in the decision making. This article through the new Anti-dumping algorithm scheme, the computer system efficiency and objectivity of the maximum implementation, and then for the new Anti-dumping algorithm Web site resource allocation model analysis, through the construction of theoretical analysis system, using the analysis of vulnerability integration search links, the theoretical analysis of the

uncertainty factors in the collection. Then according to each flaw represents the prominent question to classify, according to the indicated standard, the information data input to the theory analysis improvement plan, the model receives the data to digest processing, finally completes to the entire theory analysis model frame, then completes to the European Union resource Allocation Theory Analysis system construction. At the same time, it is necessary to make further efforts to deal with the theoretical analysis system of design and the statistical calculation of EU resource allocation loophole.

Human Subjects Approval Statement

This paper did not include human subjects.

Conflict of Interest Disclosure Statement

None declared.

References

1. Chen D, Zou F, Wang J, et al. A teaching-learning-based optimization algorithm with producer-scrounger model for global optimization. *Soft Computing*, 2015, 19(3):745-762.
2. Jiang P, Wang Z, Zhang K, et al. An Innovative Hybrid Model Based on Data Pre-Processing and Modified Optimization Algorithm and Its Application in Wind Speed Forecasting. *Energies*, 2017, 10(7):954.
3. Khatamill R, Ghorbani M A, Pourhossaini F A. Stream flow predictions using nature-inspired Firefly Algorithms and a Multiple Model strategy – Directions of innovation towards next generation practices . *Advanced Engineering Informatics*, 2017, 34:80-90.
4. Kheshti M, Kang X, Jiao Z. An Innovative Fast Relay Coordination Method to Bypass the Time Consumption of Optimization Algorithms in Relay Protection Coordination. *Journal of Electrical Engineering & Technology*, 2017, 12(2):612-620.
5. Li C, Li W Q, Li Y, et al. Research and Application of Knowledge Resources Network for Product Innovation. *The Scientific World Journal*, 2015, (2015-3-25), 2015, 2015:495309.
6. Paulo Albuquerque, Yulia Nevskaya. The Impact of Innovation and Social Interactions on Product Usage . *Food Science & Technology Research*, 2015, 15(4):361-366.
7. Shengyu Pei, Aijia Ouyang, Lang Tong. A Hybrid Algorithm Based on Bat-Inspired Algorithm and Differential Evolution for Constrained Optimization

Problems. *International Journal of Pattern Recognition & Artificial Intelligence*, 2015, 29(04):1559007-.

8. Sun Y, Lang M, Wang D. Optimization Models and Solution Algorithms for Freight Routing Planning Problem in the Multi-Modal Transportation Networks: A Review of the te-of-the-Art. *Open Civil Engineering Journal*, 2015, 9(1):714-723.
9. Wu L, Zuo C, Zhang H, et al. Bimodal fruit fly optimization algorithm based on cloud model learning. *Soft Computing*, 2017, 21(7):1877-1893.
10. Zani A, Andaloro M, Deblasio L, et al. Computational Design and Parametric Optimization Approach with Genetic Algorithms of an Innovative Concrete Shading Device System ☆ . *Procedia Engineering*, 2017, 180:1473-1483.